

S5000 Line Matrix -7X20-18 White

General

- Line Matrix DMS-white
- Pixel Matrix: 7 rows x 20 columns
- Access Type: Front

Construction

- 5052 aluminum alloy
- NEMA 3R
- Structural: AASHTO D1.2-120 mph

Dimensions

- Height: 1'10 3/4" (578 mm)
- Length: 3'6" (1068 mm)
- Depth: 7" (180 mm)
- Weight: 42 Lbs (19 Kg)

Electrical Requirements

- 24 VDC
- Complete System:
- Typical Power (Watt) 3.4

Environmental

- Operating Temperature: -30°F to +165°F (-34°C to +74°C)
- Storage Temperature: -40°F to +185°F (-40°C to +85°C)
- Humidity: 0% to 99% non-condensing

Standards

NEMA: All TS4 requirements met or exceeded including:

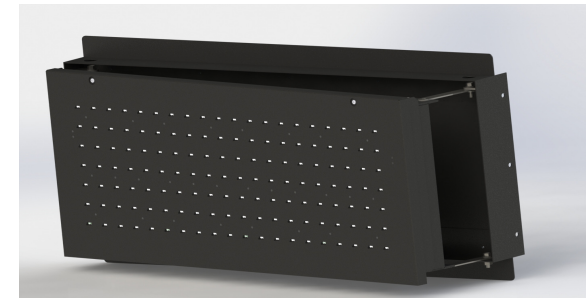
- Section 2 Environmental Requirements
- Mechanical construction
- Controller to sign interface
- Display properties
- DMS controller cabinet
- Electronics and electrical
- Performance monitoring
- Power requirements

Optical Performance

- Color: white
- Viewing Angle: 15°
- Luminance: 7440 cd/m²
- Contrast Ratio: 15:1
- Viewing distance : 1,100 feet

Example Character Capacity/Power Consumption

| Character Height | Display Boards | Font size | Characters | # of M5000 | Typical Power Consumption |
|------------------|----------------|-----------|------------|------------|---------------------------|
| 18" | 4 | 5x7 | 3 | 1 | 3.4 Watt |
| 18" | 4 | 5x7 | 3 | 2 | 6.8 Watt |
| 18" | 4 | 5x7 | 3 | 3 | 10.2 Watt |
| 18" | 4 | 4x7 | 4 | na | na |



Notes

1. Typical power determined with 50% pixels on at 50% brightness
2. Max power determined with all pixels on at 100% brightness, heaters ON
3. Additional fonts available

Related products:

Multi-DMS controller SCU6/SCU3 – Control software: Messenger

Note: SESA policy is to constantly improve its product, all product descriptions are subject to change



SES America, Inc
410 Harris Road, Smithfield RI02917
401.232.3370 www.sesamerica.com