

M6000 Full Matrix / Front Access 48x48 Full Color 20mm

General

Full Matrix DMS-Full Color
Pixel Matrix: 48 rows x 48 columns
Access Type: Front Access
Pitch: 20mm

Construction

5052 aluminum alloy
NEMA 3R
Structural: AASHTO D1.2-120 mph

Dimensions

Height: 3'11" (584 mm)
Length: 3'11" (584 mm)
Depth: 11" (279 mm)
Weight: 130# (58.9 Kg)

Electrical Requirements

110/120 VAC
Typical Power (Watt): 300
Max Power (Watt): 1000

Environmental

Operating Temperature: -30°F to +165°F
(-34°C to +74°C)
Storage Temperature: -40°F to +185°F
(-40°C to +85°C)
Humidity: 0% to 99% non-condensing

Standards

NEMA: All TS4 requirements met or exceeded
including:

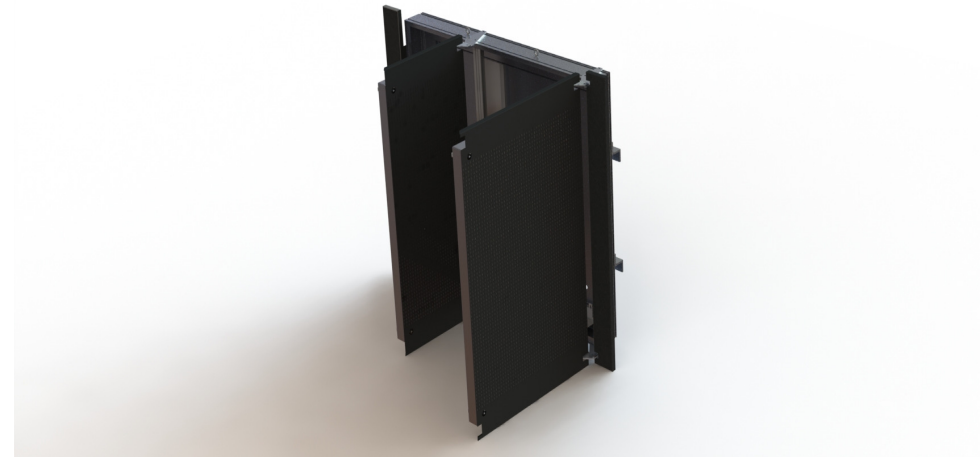
- Section 2 Environmental Requirements
- Mechanical construction
- Controller to sign interface
- Display properties
- DMS controller cabinet
- Electronics and electrical
- Performance monitoring
- Power requirements

Optical Performance

Color: Full Color
Viewing Angle: 30°
Luminance: 14,000 cd/m²
Contrast Ratio: 14:1

Example Character Capacity³

Character Height	Lines/ Characters	Interline Spacing	Character Spacing
18"	2/2	12	4
12"	3/3	8	3
9"	4/4	6	2
6"	5/5	3	1



Notes

1. Typical power determined with 30% pixels on at 60% brightness, heaters OFF
2. Max power determined with all pixels on at 100% brightness, heaters ON
3. Additional fonts available,

Related products:

Multi-DMS controller SCU6/SCU3 – Control software: Messenger

Note: SESA policy is to constantly improve its product, all product descriptions are subject to change without notice.



SES America, Inc
410 Harris Road, Smithfield RI02917
401.232.3370 www.sesamerica.com