

M6000 Full Matrix/Front Access 96x192 - Full Color

General

Full Matrix DMS-Full Color RGB
 Pixel Matrix: 96 rows x 288 columns
 Access Type: Walk IN

Construction

5052 aluminum alloy
 NEMA 3R
 Structural: AASHTO D1.2-120 mph

Dimensions

Height: 75.75" (1924.05 mm)
 Length: 150.75" (3829.05 mm)
 Depth: 14.125" (358 mm)
 Weight: 1000 # (470 Kg)

Electrical Requirements

120/240 VAC single phase
 Typical Power 1080 Watts
 Max Power 3600 watts

Environmental

Operating Temperature: -30°F to +165°F
 (-34°C to +74°C)
 Storage Temperature: -40°F to +185°F
 (-40°C to +85°C)
 Humidity: 0% to 99% non-condensing

Standards

NEMA: All TS4 requirements met or exceeded including:

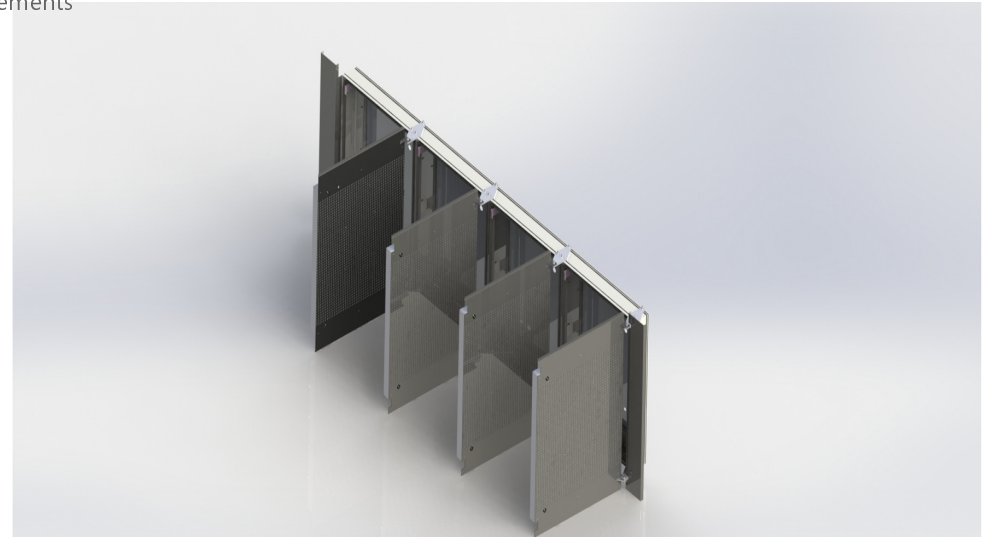
- Section 2 Environmental Requirements
- Mechanical construction
- Controller to sign interface
- Display properties
- DMS controller cabinet
- Electronics and electrical
- Performance monitoring
- Power requirements

Optical Performance

Color: Full Color RGB
 Viewing Angle: 30°
 Luminance: 16,100 cd/m²
 Contrast Ratio: 15:1

Example Character Capacity³

| Character Height | Lines/ Characters | Font size | Interline Spacing | Character Spacing |
|------------------|-------------------|-----------|-------------------|-------------------|
| 6" | 9/44 | 7x5 | 3 | 1 |
| 9" | 5/25 | 12x8 | 6 | 2 |
| 12" | 4/18 | 15x10 | 8 | 3 |
| 18" | 3/12 | 23x15 | 12 | 4 |



Notes

1. Typical power determined with 30% pixels on at 60% brightness, heaters OFF
2. Max power determined with all pixels on at 100% brightness, heaters ON
3. Additional fonts available

Related products:

Multi-DMS controller SCU6/SCU3 – Control software: Messenger

Note: SESA policy is to constantly improve its product, all product descriptions are subject to change without notice.



SES America, Inc
 21 Quinton Street, Warwick, RI 02888
 401.232.3370 www.sesamerica.com